



CONNECTICUT LEAGUE OF  
CONSERVATION VOTERS

# 2023 ENVIRONMENTAL SCORECARD





553 Farmington Avenue, Suite 201  
Hartford, CT 06105  
(860) 236-5442  
ctlcv@ctlcv.org

www.CTLCV.org

 @ctlcv

 @ctlcv1

 @ctlcv1

# DAVID ANDERSON

## 1925-2023

*In memory of David Anderson*

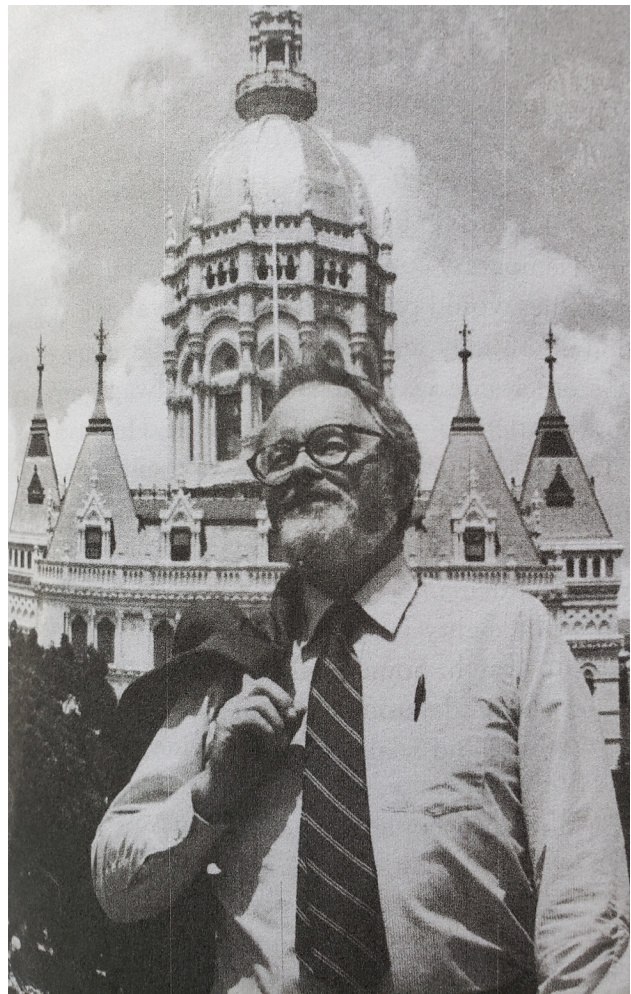
David Anderson served in the CT General Assembly from 1980 to 1992. He has long been associated with efforts to support energy conservation, clean energy, and was a determined climate activist. As Ranking Member of the Energy & Public Utilities Committee and member of the Environment Committee, he authored the first solar power bill to address climate change and fought for landmark legislation to mandate recycling in Connecticut. David was especially gifted at working across the aisle.

In addition to his long history of civic and environmental work, David was a teacher, a wrestling coach, a Russian scholar, a musician, a corporate executive, a Justice of the Peace, President of the Norwich YMCA and chairman of multiple town committees working on conservation, parks, and planning. He was an active CTLCV board member, and we will greatly miss his guidance and enthusiasm.

## BOARD OF DIRECTORS

David Bingham, Co-Chair  
Mary Hogue, Co-Chair  
Lynn Werner, Treasurer  
Roger Reynolds, Secretary  
Jessica Bailey  
Joseph McGee  
Margaret Miner  
Denise Savageau  
Jimmy Tickey  
Adam Wood

*Special thanks to Claire Cody, Ellie Crone, Maggie McInerney, and Alyssa Prozzo for their enthusiastic assistance in the production of the 2023 Scorecard!*



# HOW TO USE THIS SCORECARD

## HOW BILLS ARE SELECTED

The legislation included in this Scorecard represents a diverse set of environmental concerns. Environmental groups from around the state inform us about their priority bills. We consult with advocates throughout the session, lobby lawmakers on important initiatives, and track their votes. Committee votes are important. This year, many bills were voted out of committee after battles that reflected strong positions for or against them, but failed to progress any further. Several important bills were voted out of committee, only to be split apart and recombined with unrelated issues that we could not score. CTLCV often included committee votes whether or not the bill had a final vote in the House or Senate.

This year's Scorecard includes 31 environmental bills to produce an ENVIRONMENT SCORE, and 3 voting rights bills to produce a separate DEMOCRACY SCORE. CTLCV's work is at the intersection of these issues, and we consider equity and environmental justice impacts before supporting or opposing any legislation.

**OUR ENVIRONMENTAL SCORECARD IS MADE POSSIBLE THROUGH THE GENEROUS SUPPORT OF OUR MEMBERS AND DONORS**

## HOW LEGISLATORS ARE SCORED

CTLCV grades legislators on a scale from 0% to 100% based on their votes on environmental bills in committees, the Senate, and the House. The 2023 final score is the average of the legislator's individual votes on key bills. A blank space means there was no vote to score for that legislator on that bill. We do not score absences or abstentions, but they are denoted on our scorecard with an "A." While the most recent session reflects current positions on specific bills, watching the long-term voting patterns can give a broader view of legislators' priorities.

## HOLD LAWMAKERS ACCOUNTABLE

CTLCV fights to protect our state's great natural legacy for future generations. To do this, we must hold our elected officials accountable. This Scorecard shows how your lawmakers voted on key environmental and voting rights bills during the most recent legislative session.

- 1 Follow CTLCV on Facebook, Twitter or Instagram
- 2 Sign up for Action Alerts
- 3 Tell lawmakers you know their score!

To learn more and join our movement, visit us online at [CTLCV.org](https://CTLCV.org).

# ENVIRONMENTAL SCORECARD

CTLCV has prepared this annual Environmental Scorecard to review the wins, losses, and how your elected State Representatives and Senators voted on legislation in 2023.

## 2023 LEGISLATIVE HIGHLIGHTS

It is noteworthy that many excellent bills were passed out of their respective committees, but those were often the only votes on legislation that was left to die without further action. The good news is that lawmakers were able to achieve wins for wildlife: new laws were passed to help restore eel grass, protect shoreline nesting birds, stop the overharvesting of horseshoe crabs, and reduce “light pollution” detrimental to migratory birds.

With regards to land conservation and public access, the state’s biennial budget includes bond authorizations up to \$3 million annually for the Recreation and Natural Heritage Trust Program; \$10 million annually for the Open Space and Watershed Land Acquisition Grant Program; and \$10 million annually for the Connecticut Recreational Trails Program. Wins also came in the areas of Environmental Justice and voting reforms, resulting in some of the strongest laws in the nation.

While CTLCV celebrates these victories, we are frustrated that climate issues were completely overlooked. The failure to pass climate bills this year means further delays in addressing the root causes of climate change. Complicating matters, DEEP’s legislative package was released unusually late, well after the public hearing process had started. Consequently, bills were being drafted for public hearings without DEEP’s information. The package DEEP ultimately proposed included legislation to address waste management, environmental justice, bears, and climate change.

### Climate Change

DEEP’s proposal, Senate Bill 1145, was an ambitious climate initiative that aimed to update our Global Warming Solutions Act. This initiative would have implemented strong policies to reduce emissions, granted DEEP the authority to implement programs, and held our state accountable for achieving our climate goals.

When lawmakers derailed that legislation, advocates intensified their efforts on another bill that would have declared a “climate crisis” and called for a comprehensive plan to reach our state’s emissions targets. House Bill 6397 would have established a “Decarbonization Roadmap” putting us on a path to reach zero-carbon emissions by 2050. We commend leaders in the House for passing this legislation, but the Senate allowed the bill to die without action.

Another missed opportunity for reducing emissions was the “Carbon Free & Healthy Schools” bill. This popular initiative would have provided funding and technical assistance to help public schools access clean energy and cut costs through energy efficiency programs. Senate Bill 961 passed the Senate but was not called in the House. The only notable progress on climate this year was included in Senate Bill 904, which now requires the CT Department of Transportation to establish a carbon “budget” for the transportation sector.

### Environmental Justice

A major victory was scored with the passage of Senate Bill 1147 to advance Environmental Justice. This law now requires greater emphasis to be placed on cumulative health and environmental impacts when permitting new polluting facilities, giving DEEP the ability to deny permits in communities already overburdened by pollution.

## Pesticides

Eliminating deadly toxins from our environment is always a top priority. Senate Bill 963, a bill banning neonicotinoids, and Senate Bill 962, which sought to restrict the use of deadly rodenticides, were crucial measures for protecting our pollinators and bird populations. There was tremendous public support for both of these measures, but industry interests were prioritized and the bills ultimately failed.

## Waste

Proposals to address our growing waste problem were not well formulated at the beginning of the session. There were many different approaches considered by a legislative working group, as well as proposals formulated by the CT Coalition for Sustainable Materials Management (which included municipalities and the Administration). House Bill 6664 that became the omnibus waste bill faced strong opposition from the waste haulers and underwent multiple revisions. Environmental groups fought hard to amend the bill and to prioritize food waste diversion. However, the legislature flipped in the other direction, eliminating support for food waste programs and opening the door for more incineration. This unfinished business remains a huge concern for municipalities and state leaders.

## Voting Rights

The more voices heard in our democratic process, the better it is for our democracy, and for electing leaders who will act on important environmental and climate initiatives. The Early Voting legislation and the John R. Lewis Voting Rights Act were both signed into law and will immediately help us build a stronger, more inclusive democracy infrastructure in our state.



There are many more bills that CTLCV worked on and tracked this session with implications for our environment.

Please visit our website at [ctlc.org](http://ctlc.org) to view the recording of our 2023 legislative debrief where we spoke with elected leaders about the challenges, successes, and unfinished business from this session.



*The CTLCV Team*

# LEGISLATIVE WINS

| Issue                      | Bill #                  | Bill Title   | Position |
|----------------------------|-------------------------|--|----------|
| <b>Environmental Bills</b> |                         |  |          |
| PFAS                       | <a href="#">SB 100</a>  | Provide Grants to Towns That Need PFAS Testing and Remediation                               | SUPPORT  |
| Trees                      | <a href="#">SB 896</a>  | Tree Removal on Properties Controlled by DEEP  | SUPPORT  |
| Carbon/Trees               | <a href="#">SB 904</a>  | Implementing the Recommendations of the Department of Transportation                         | SUPPORT  |
| Enforcement                | <a href="#">SB 964</a>  | Consent Orders of DEEP   | OPPOSE   |
| Transportation             | <a href="#">SB 1083</a> | Establishing a Transportation Carbon Budget for the State [SEE SB 904]                       | SUPPORT  |
| Environmental Justice      | <a href="#">SB 1147</a> | The Environmental Justice Program of DEEP  | SUPPORT  |
| Bottle Bill                | <a href="#">SB 1236</a> | Amount of Unclaimed Beverage Container Deposits [PASS IN BUDGET]                             | SUPPORT  |
| Eel Grass                  | <a href="#">HB 6480</a> | Establishing a Working Group on Restoration of Eel Grass                                     | SUPPORT  |
| Trails                     | <a href="#">HB 6482</a> | Bonding for Bikeways, Greenways and Recreational Trails [PASS IN BUDGET]                     | SUPPORT  |
| Open Space                 | <a href="#">HB 6483</a> | Open Space and Watershed Land Acquisition Grant Program [PASS IN BUDGET]                     | SUPPORT  |
| Crabs                      | <a href="#">HB 6484</a> | Harvesting of Horseshoe Crabs  | SUPPORT  |
| Tires                      | <a href="#">HB 6486</a> | Extended Producer Responsibility for Tires (EPR)   | SUPPORT  |
| Light Pollution            | <a href="#">HB 6607</a> | The Nighttime Lighting of State-Owned Buildings at Certain Times for the Protection of Birds | SUPPORT  |
| Shorebirds                 | <a href="#">HB 6813</a> | Establishment of a Seabird and Shorebird Protection Program                                  | SUPPORT  |
| <b>Voting Rights Bills</b> |                         |  |          |
| Voting Rights              | <a href="#">SB 1226</a> | State Voting Rights in Recognition of John R. Lewis  | SUPPORT  |
| Early Voting               | <a href="#">HB 5004</a> | Early Voting   | SUPPORT  |
| Absentee Voting            | <a href="#">HJ 1</a>    | Resolution Approving a State Constitutional Amendment to Allow No-Excuse Absentee Voting     | SUPPORT  |

# UNFINISHED BUSINESS

| Issue                      | Bill #                  | Bill Title   | Position |
|----------------------------|-------------------------|--|----------|
| <b>Environmental Bills</b> |                         |  |          |
| Energy Efficiency          | <a href="#">SB 4</a>    | Connecticut Present and Future Housing Needs   | SUPPORT  |
| Schools                    | <a href="#">SB 961</a>  | Carbon-Free School Requirements for New School Construction  | SUPPORT  |
| Rodenticides               | <a href="#">SB 962</a>  | The Use of Certain Rodenticides  | SUPPORT  |
| Neonics                    | <a href="#">SB 963</a>  | Neonicotinoids for Nonagricultural Use   | SUPPORT  |
| Buildings                  | <a href="#">SB 979</a>  | CT Home Energy Label and Tree Canopy of Certain Municipalities [SEE SB 896 PARTIAL WIN]                      | SUPPORT  |
| ATS                        | <a href="#">SB 1001</a> | Certain Sewage Disposal Systems  | OPPOSE   |
| MDC                        | <a href="#">SB 1139</a> | The Metropolitan District of Hartford County   | SUPPORT  |
| Climate                    | <a href="#">SB 1145</a> | Sector Specific Subtargets for Greenhouse Gas Emissions Reductions   | SUPPORT  |
| Bears                      | <a href="#">SB 1148</a> | Authorizing Certain Killing of Black Bears and Prohibiting Intentional Feeding                               | N/A      |
| Composting                 | <a href="#">HB 5577</a> | Surplus Food Donation and Food Composting Requirements   | SUPPORT  |
| Seismic Tests              | <a href="#">HB 5602</a> | Prohibiting High-Frequency Commercial Seismic Surveying in Long Island Sound for Gas and Oil Exploration     | SUPPORT  |
| Roadmap                    | <a href="#">HB 6397</a> | Zero Carbon Emissions  | SUPPORT  |
| Balloons                   | <a href="#">HB 6481</a> | Intentional Release of Certain Balloons  | SUPPORT  |
| Green Burials              | <a href="#">HB 6485</a> | Natural Organic Reduction  | SUPPORT  |
| Energy Data                | <a href="#">HB 6497</a> | Study of Energy Data Collection and Public Access  | SUPPORT  |
| Polystyrene                | <a href="#">HB 6606</a> | Use of Certain Products Made from Polystyrene  | SUPPORT  |
| Plastic Straws             | <a href="#">HB 6608</a> | Distribution of Single-Use Plastic Straws and Stirrers by Certain Restaurants                                | SUPPORT  |
| Land Use                   | <a href="#">HB 6647</a> | The State Plan of Conservation and Development   | SUPPORT  |
| Waste                      | <a href="#">HB 6664</a> | Management of Solid Waste and Establishing the MIRA Dissolution Authority                                    | OPPOSE   |
| Solar                      | <a href="#">HB 6764</a> | Solar UCT and Modifications to the State's Renewable Energy Programs   | SUPPORT  |
| River Buffers              | <a href="#">HB 6809</a> | Financial Incentives for Certain Streamside River Buffers and Training for Inland Wetland Commission Members | SUPPORT  |
| Environmental Rights       | <a href="#">HJ 37</a>   | Resolution Proposing an Amendment to the State Constitution to Provide for Environmental Rights              | SUPPORT  |

## BEHIND THE SCENES

There was a lot of in-person activity at the legislature this year, which made a big difference in our ability to connect with our state lawmakers. There were also changes in committee leadership and dozens of freshmen legislators who were less familiar with the issues and the advocates.

CTLCV worked alongside our coalition partners to lobby legislators and send action alerts to our members about important opportunities to voice their positions on bills. We regularly updated our legislative Watchlist, posted testimony, and provided Briefing Papers on our website as a resource for members and legislators. We extend our deep appreciation to the environmental champions within the legislature, and to our dedicated colleagues and members who tirelessly worked towards the passage of crucial environmental and voting rights bills.

Looking ahead, we must recognize the significance of our state's lack of action on climate policy this year and unite as a force to challenge our leaders to do more. Now is the time to raise our voices, mobilize our communities, and demand that our elected officials prioritize climate on the agenda.



*Youth marching to end fossil fuels.*



*State Representatives Christine Palm, David Michel, and Aundre Bumgardner call for climate action at the State Capitol*





# ENVIRONMENT BILLS SCORED

## ENERGY EFFICIENT HOUSING

**SB 4 Connecticut Present and Future Housing Needs: SUPPORT/ FAIL WITH PARTIAL WIN IN THE BUDGET**

Senate Bill 4 was a comprehensive housing bill to increase affordable housing, and invest in efficiency and clean energy in communities that need it most. SB 4 was not acted on in the Senate. However, a component of SB 4 was included in the budget to create a \$125 million low-interest “Housing Environmental Improvement Revolving Loan Fund” to provide funding for multi-family, tenant occupied housing in Environmental Justice communities. These retrofit projects seek to 1) improve energy efficiency including heat pumps, solar power generating systems, and insulation, 2) remediate health and safety concerns like mold and asbestos, and 3) facilitate access to state and federal energy efficiency programs.

-----

## PFAS

**SB 100 Establishing an Account in the GF to Provide Grants to Towns that Need PFAS Testing and Remediation: SUPPORT/PASS**

PFAS (perfluoroalkyl and polyfluoroalkyl substances) are chemicals commonly used in non-stick cookware, water-repellent clothing, stain-resistant fabrics and carpets, some cosmetics, and food packaging. Known as “forever chemicals,” these highly toxic substances do not break down in the environment and often end up in our water supply. This contamination is highly toxic to humans and wildlife. SB 100 provides funding to DEEP to test drinking water supplies

## TREES

**SB 896 Tree Removal on Properties controlled by DEEP: SUPPORT/PASS**

This bill adds a requirement for DEEP to submit an annual report to the Environment Committee about hazardous trees removed on properties controlled by DEEP. The report will include the location, reasons, and types of trees removed as well as a replanting plan. Separately, the bill sets a state goal to increase the total percentage of environmental justice communities that are covered by tree canopy by 2040. The state will work to increase tree cover by 5% in communities with a current tree canopy of less than 40%. This will improve community air quality, cool the summer heat, and provide overall health benefits to residents.



## CARBON BUDGET/TREES

**SB 904 Implementing the Recommendations of the Department of Transportation: SUPPORT/PASS**

This legislation focused on a wide range of safety and transportation issues and was amended to include significant environmental policies including 1) a study of DOT’s controversial tree cutting and vegetation management practices, and 2) the establishment of a “carbon budget” for DOT that sets the maximum amount of carbon dioxide emissions allowed from the transportation sector in alignment with the state’s climate goals. [See SB 1084]

## CARBON FREE SCHOOLS

### **SB 961 Carbon-Free School Requirements for New School Construction: SUPPORT/FAIL**

Improving school facilities will make it easier for teaching and learning, free from distractions such as extreme temperatures, noisy HVAC systems, and poor lighting. SB 961 sought to leverage a state investment of \$25 million to establish a new program at the CT Green Bank. This program would help schools carry out cost-saving energy projects. It would have funded feasibility studies for solar and energy efficiency, provided districts with technical assistance to evaluate and implement projects, provided \$400 million in project financing through the CT Green Bank, and helped districts access federal funding opportunities including significant federal tax credits. The bill passed the Senate with unanimous consent but was not raised for a vote in the House.

---

## RODENTICIDES

### **SB 962 The Use of Certain Rodenticides: SUPPORT/FAIL**

Wildlife rehabilitators and biologists are seeing Connecticut's birds of prey dying from rodenticide poisoning at alarming rates. Legislation was introduced in 2022 to ban rodenticides that are having a devastating impact on birds that naturally prey on rodents. Hawks, owls, raptors, pets and other animals unknowingly consume this poisoned prey and suffer painful side effects or death. The legislation was reintroduced this year but was stripped of a core provision in the Environment Committee that would have prevented the widespread use of this poison by pest control companies. The bill died when it was not brought out for a vote in the Senate.

## NEONICS

### **SB 963 Use of Neonicotinoids: SUPPORT/FAIL**

Neonicotinoids ("neonics") are a neurotoxic pesticide linked to massive bee and insect population declines on a global scale and are increasingly linked to vast water and soil contamination, ecosystem-wide harms, and human health concerns. SB 963 aimed to prohibit unnecessary uses on residential landscapes such as lawns and golf courses. Neonic-coated seeds permeate plants turning their nectar, pollen and fruit toxic. The seeds can be dispersed by wind and rain to contaminate water, soil, and plants. Limiting the use of neonics for non-agricultural purposes would have been a major step in the right direction. The language of the bill was based on legislation already adopted in other states, and passed the Environment Committee with bipartisan support. The bill died when it was not brought up for a vote in the Senate.

---

## CONSENT ORDERS

### **SB 964 Consent Orders of the Department of Energy and Environmental Protection: OPPOSE/FAIL**

This legislation has been defeated multiple times because it would impede DEEP's ability to modify or revoke any Consent Order that has been established to resolve an environmental violation. It is important for DEEP to have multiple options to resolve enforcement cases. Consent Orders are one option available that allow regulated entities (such as a business that unlawfully pollutes a waterway) to resolve a case through negotiated terms and avoid further punitive action. When a party enters into such an agreement, it accepts the Order subject to DEEP's discretion to revoke the order if the violator fails to adhere to the agreement. Consent Orders are often the preferred option by the regulated party, as they offer flexibility for resolving

issues that led to the violation, and it ensures that the damage to the environment will be remediated. It is an important enforcement tool that should not be eliminated.

---

## **ENERGY EFFICIENT BUILDINGS**

**SB 979 The Establishment of the Connecticut Home Energy Label and the Tree Canopy Of Certain Municipalities. SUPPORT/FAIL (SEE SB 896 FOR TREE CANOPY)**

SB 979 was a proposal to promote energy efficiency and affordability. It required landlords to provide a “Home Energy Label” for rental units that would make energy costs transparent and incentivize landlords to improve the energy efficiency of their properties. Another provision of the bill aimed to increase the natural tree cover by 5% in Environmental Justice communities and municipalities with populations of at least 100,000 by 2024. While SB 979 did not pass, the tree canopy provision was amended to another bill which passed, SB 896.

---

## **CARBON BUDGET**

**SB 1083 Establishing a Transportation Carbon Budget for the State:**

**SUPPORT/PASS IN SB 904**

In Connecticut, the transportation sector accounts for 37% of our total greenhouse gas emissions. SB 1083 directed DOT to work with DEEP to establish a transportation carbon budget annually for the state that sets the maximum amount of allowable greenhouse gas emissions from the transportation sector. When setting the budget, the agencies were required to consider the state’s long-term emissions reductions goals. The bill passed with strong support from the Transportation Committee, and was later merged into SB 904, which is also scored.

## **ENVIRONMENTAL JUSTICE**

**SB 1147 The Environmental Justice Program of DEEP: SUPPORT/PASS**

The language in SB 1147 was based on New Jersey’s Environmental Justice law passed in 2021. Now Public Act 23-202, the Connecticut law gives DEEP the authority to deny permits for new polluting facilities in already overburdened communities based on the cumulative impact on public health and the environment. It requires community resident involvement in Community Environmental Benefit Agreements, and requires DEEP and the Siting Council to impose conditions on the construction and operations of the facility to mitigate public health impacts if a permit is granted. The Senate passed a last minute amendment that excluded existing facilities, which was a setback, but the legislation is still considered a huge step forward for Environmental Justice in Connecticut.

---

## **BOTTLE BILL**

**SB 1236 Amounts of Unclaimed Beverage Container Deposits: SUPPORT/PASS IN BUDGET**

Connecticut recently expanded its landmark container recycling law in 2021 to cover more types of containers and increase the deposit amount to further incentivize recycling. An effective Bottle Bill program provides enforceable recycling targets to ensure the deposit does not simply become a tax. This year, a bill was proposed to allow the beverage industry to keep 100% of consumers’ unredeemed deposits, costing the state an estimated \$64 million in annual revenue loss. Without proper safeguards, this would have incentivized the beverage industry to recycle less, not more. The legislation was amended to tie the amount kept by industry to increasing recycling rates. To ensure the program is effective over time, there must be a robust public education and marketing campaign about the bottle deposit program.

SB 1236 was incorporated into the budget, but not the education program. There was only one sentence in another bill, SB 985, calling for the industry to educate consumers about the ten-cent deposit. More work is needed to increase recycling rates and further expand the types of redeemable containers to include wine, liquor, and nips.



## METROPOLITAN DISTRICT

**1139 The Metropolitan District of Hartford County: SUPPORT/FAIL**

The MDC controls the largest water system in the state. How it is managed impacts the entire state's ability to handle droughts, allocate water fairly, structure rates that promote conservation, prepare for climate change and protect our rivers, streams and wetland habitats. This quasi public-private Authority has long been at the center of controversy due to its lack of accountability and for policy decisions that are not always in the best interest of the public it was created to serve. SB 1139 called for a task force to review their finances, operations, and ethical standards. The task force would have also reviewed how MDC commissioners are appointed, set term limits, and require the MDC to adopt and enforce a model code of ethics.

## GREENHOUSE GAS EMISSIONS

**SB 1145 The Establishment of Sector Specific Sub-Targets for Greenhouse Gas Emissions Reductions: SUPPORT/FAIL**

Our state's mandated emissions targets in the Global Warming Solutions Act will not be met without a plan to get there and the ability to enforce it. SB 1145 contained a variety of much needed reforms to:

- Update the GWSA emission targets to net-zero by 2050, consistent with federal goals
- Enforce compliance with GWSA requirements
- Require climate impacts be considered in decision making across state agencies, with mitigation measures in place if there is an increase in emissions
- Give state agencies the authority to adopt regulations to meet our climate targets
- Provide for citizen enforcement of the GWSA
- Add policies and regulations to mitigate carbon pollution using nature-based solutions

The legislation passed the Environment Committee, but opponents objected to giving additional powers to DEEP and the bill was definitively rejected without action in the Appropriations Committee.



## SEISMIC SURVEY

**HB 5602 Prohibiting High-Frequency Commercial Seismic Surveying in Long Island Sound For Gas and Oil Exploration: SUPPORT/FAIL**

Seismic surveying and exploratory drilling in Long Island Sound could severely impact marine mammals which rely on this important habitat to live, feed, and breed. Seismic mapping uses sound wave technology that can lead to hearing loss in some species, causing abandonment of habitat, beach strandings or death. HB 5602 would have prohibited seismic mapping and drilling in coastal state waters.

---

## DECARBONIZATION ROADMAP

**HB 6397 Zero Carbon Emissions: SUPPORT/FAIL**

Connecticut is not on track to reach its climate goals under the Global Warming Solutions Act. The only way to reduce our greenhouse gas emissions in line with our goals is to develop a comprehensive plan that establishes policies, enables specific actions, and has both long and short term timelines. Instead of requiring the legislature to approve every new program or update, a “decarbonization roadmap” would set policies with benchmarks across multiple agencies to guide state action and hold our state accountable.

This legislation called for DEEP to produce a roadmap by July 2025. While the legislature failed to pass HB 6397, DEEP subsequently received a federal grant of \$3 million from the Inflation Reduction Act to develop an economy-wide climate mitigation plan for reducing greenhouse gas emissions. Once completed, the plan will open the door for larger federal grants for implementation, creating work across many sectors.

## EEL GRASS

**HB 6480 Establishing a Working Group on the Restoration of Eel Grass: SUPPORT/PASS**

Eel grass is an underwater grass that grows in the coastal waters of bays, estuaries, and beaches of Long Island Sound. Eel grass habitat provides important foraging areas for fish and food for many migratory birds. Healthy eel grass beds trap sediment and reduce wave energy during storms, improving water quality and protecting coastal areas from erosion due to sea level rise. The bill requires the Environment Committee to convene a working group on the restoration of shoreline eel grass and issue a report no later than February 2024.

---

## BALLOONS

**HB 6481 Intentional Release of Balloons: SUPPORT/FAIL**

HB 6481 would have prohibited the intentional release of large quantities of helium balloons into the air that eventually drop on land or waterways. In addition to becoming a common source of litter, helium balloons pose a threat to birds, fish, and other wildlife through ingestion and entanglement. Balloons break down into microplastics that pollute our waters and are eaten by fish and invertebrates. While enforcement could be a challenge, HB 6481 would have helped to raise public awareness about the hazards these balloons pose to the environment and wildlife throughout the state.

---

## RECREATIONAL TRAILS

**HB 6482 Bonding for Bikeways, Greenways, Recreational Trails: SUPPORT/PASS IN BUDGET**

Provisions of HB 6482 were included in the state budget to increase the bond authorization for DEEP’s Recreational Trails and Greenways Grants Program to \$10 million per year. These funds may be used for the construction, maintenance, accessibility, and restoration of existing

trails; acquisition of land or easements for trails and trail corridors; and operation of relevant outdoor educational programs.

---

## OPEN SPACE

### HB 6483 Open Space & Watershed Land Acquisition Grant Program:

#### SUPPORT/PASS IN BUDGET

HB 6483 called for increasing the bond authorization for the Open Space and Watershed Acquisition Grant Program (OSWA) administered by DEEP to \$10 million per year. The OSWA program and the bonding needed to support it is essential to the state's efforts to meet its statutory 21% open space conservation goal. A technical fix to the OSWA program was included in another bill (SB 1146) to increase access to federal funds alongside state bonding.

---

## HORSESHOE CRABS

### HB 6484 Certain Harvesting of Horseshoe Crabs: SUPPORT/PASS

Connecticut's horseshoe crab population has seen a steep decline over the last 15 years. Commercial fishermen chop up horseshoe crabs as bait and biomedical researchers use horseshoe crab blood for vaccine research. The harvesting and poaching of these ancient species impact shorebird populations that rely on horseshoe crab eggs for sustenance. Limiting the harvesting of horseshoe crabs will help maintain our state's vibrant shoreline ecosystem. This law now prohibits the hand-harvesting of horseshoe crabs and horseshoe crab eggs from CT waters and shorelines.



## NATURAL ORGANIC REDUCTION

### HB 6485 Natural Organic Reduction:

#### SUPPORT/FAIL

HB 6485 would have allowed for the conversion of human remains to soil ("natural organic reduction" or "terremation") as an option for managing human remains after death. This option has been made available to people in several other states and is the preferred choice for many due to environmental, personal, and economic reasons. This process does not use hazardous embalming chemicals that contaminate our soil, air, and water. Natural organic reduction has a lower carbon footprint than cremation, which can emit 564 lbs. of carbon dioxide due to the burning of natural gas. It also reduces the need for millions of acres of forest for wood, or mining for metal to produce caskets and vaults used in traditional burial practices in the U.S.



## TIRES

### HB 6486 Extended Producer Responsibility for Tires: SUPPORT/PASS

HB 6486 required the tire industry to be responsible for how tires are disposed of, reducing illegal tire dumping, and increasing tire recycling. Tire producers must abide by a state program that will manage how old tires will be resold or recycled. However, the bill was amended to include the burning of tires to count as proper recycling. The burning of tires is extremely harmful to the atmosphere and environment, and therefore does not provide true Extended Producer Responsibility. This additional amendment is scored separately.

## POLYSTYRENE

### **HB 6606 The Use of Certain Products Made from Polystyrene: SUPPORT/FAIL**

HB 6606 would have banned Expanded Polystyrene products in certain schools and restaurants. Commonly known as “Styrofoam,” this material is not recyclable in CT and does not break down in the natural environment. It degrades into microplastics and can leach carcinogenic chemicals such as styrene and benzene that pollute our waterways and threaten marine life. These products are usually a single-use item that significantly contributes to our already overburdened waste stream.

---

## LIGHT POLLUTION

### **HB 6607 The Nighttime Lighting of State-Owned Buildings at Certain Times for the Protection of Birds: SUPPORT/PASS**

Light pollution caused by artificial lights around buildings can be fatal to migrating birds. HB 6607 requires state buildings to turn off unnecessary outdoor lighting at night. This will save both energy and birds, such as the endangered American Bittern, Tree Swallow, Connecticut Warbler, and Hummingbirds which are known to migrate to and from Connecticut during migration periods in the spring and fall. Nighttime lighting confuses them and often leads to building strikes and fatalities. HB 6607 will help these birds pass safely through Connecticut on their migration path.

---

## PLASTIC STRAWS

### **HB 6608 The Distribution of Single-Use Plastic Straws and Stirrers by Certain Restaurants: SUPPORT/FAIL**

Our waterways and shorelines are increasingly littered with millions of tons of single-use plastics like straws, utensils, food packaging and other waste. The consequences are disastrous for more

than 200 species of marine animals, who become entangled in plastic or suffer from deadly intestinal obstructions. HB 6608 would have prohibited a full-service restaurant from automatically giving a customer a single-use plastic straw or stirrer unless the customer requests one, thereby reducing these non-recyclable items in CT’s waste stream.

---

## PLAN OF CONSERVATION & DEVELOPMENT

### **HB 6647 The State Plan of Conservation and Development: SUPPORT/FAIL**

HB 6647 would have updated the State Plan of Conservation and Development (POCD) which must be done every five years. The POCD provides essential guidance to towns and municipalities when updating their local plan. By law, towns must indicate if their plan is consistent with the State POCD, but the state plan is already out of date, relying on old data. This bill allowed more time for the Office of Policy and Management to revise the Plan with the intent of including broader provisions for the state’s long-term sustainability goals for climate, energy, transportation, and biodiversity.

---

## SOLAR

### **HB 6764 A Solar Uniform Capacity Tax and Modifications to the State’s Renewable Energy Programs: SUPPORT/FAIL**

This bill sought various changes in laws mostly related to solar generating facilities, including taxation and property tax, siting, solar canopies, and agency reporting requirements. Our state’s ability to increase our solar energy production is critical to reaching our clean energy goals under the Global Warming Solutions Act. The success of our solar programs hinges on removing unnecessary barriers.

## WASTE MANAGEMENT

**HB 6664 Management of Solid Waste and Establishing the MIRA Dissolution Authority:**  
**OPPOSE/PASS**

The norm for disposing of waste has historically leaned towards landfilling or incinerating trash, but proximity to those hazardous sites puts residents at higher risk for respiratory illness. The closing of our state's largest trash incinerator—and no agreed-upon plan to handle the waste—has resulted in Connecticut paying to ship 800,000 tons of waste out of state annually to be burned or landfilled elsewhere. Instead of setting policies to reduce our waste, the focus of HB 6664 became the management of our growing waste stream which continues to rely on incineration. Whether it is called “waste-to-energy” or “chemical recycling”, it is all incineration that pollutes our air and affects public health and our climate.

HB 6664 also undermined the CT Green Bank's purpose by changing the legislative mandate for the types of projects they can finance. The legislature added incineration—the least sustainable way of managing waste, and one of the dirtiest forms of energy—to the Green Bank's list of allowable projects.

---

## STREAMSIDE RIVER BUFFERS

**HB 6809 Financial Incentives for Certain Streamside River Buffers and Training for Inland Wetland Commission Members:**  
**SUPPORT/FAIL**

Vegetated buffers along rivers and streams are one of the most cost-effective nature-based solutions to reducing pollution. These buffers reduce erosion, flooding, and provide critical habitats for wildlife. HB 6809 would have allowed DEEP to use available funds for stormwater infrastructure (including funding from the American Rescue Plan Act) to conserve native vegetation along streams and rivers. It would also have expanded the current training requirement for volunteers serving on Inland Wetland Agencies.

**True solutions for waste reduction and recycling are available. We must focus on waste reduction through food composting, efficient recycling, and unit-based pricing, and not support polluting technology such as incineration.**



## SHOREBIRD PROTECTION

**HB 6813 Authorizing the Establishment of a Seabird and Shorebird Protection Program:**  
**SUPPORT/PASS**

While there are efforts by DEEP to protect shoreline nesting areas with string fencing and signage, the lack of enforcement and public awareness has resulted in many fatal encounters for birds with humans and their dogs. HB 6813 authorizes DEEP to establish a seabird and shorebird protection program, along with a list of species to include in the management program. The new law lets DEEP identify and assign shorebird protection areas along the coastline and rope off key breeding sites on state-owned lands between the months of March and September. The law also establishes a separate infraction for each violation for anyone who disturbs these areas. Implementing infractions—not just warnings—is the simplest way to increase awareness and help protect nesting birds along our coasts.



# VOTING RIGHTS BILLS



## VOTING RIGHTS ACT

**SB 1226 State Voting Rights in Recognition of John R. Lewis: SUPPORT/PASS**

Connecticut has established a groundbreaking standard for upholding the freedom to vote. The Connecticut Voting Rights Act is the most comprehensive in the nation to protect voters of color and strengthen Connecticut's democracy. This new law puts the burden on local governments with records of discrimination to prove that certain voting changes won't harm voters of color before they can be implemented. It provides new legal tools to fight discriminatory voting rules in court and expands language assistance for voters with limited English. It creates strong protections against voter intimidation, deception, or obstruction, and creates a central hub for election data and demographic information that will empower officials and community members to ensure accessible elections.

---

## NO-EXCUSE ABSENTEE VOTING

**HJ 1 Resolution Proposing a State Constitutional Amendment Allowing for No-Excuse Absentee Voting (NEAV):**

**SUPPORT/ PASS**

Connecticut's rules for absentee voting are some of the most restrictive in the country. NEAV allows citizens to vote absentee without requiring an approved "excuse," which until now limited the number of people who could legally use an absentee ballot. This will reduce congestion at the polls and make it easier for more people to participate in elections. Now that the proposal has passed the Connecticut General Assembly in two consecutive legislative sessions, there will be a referendum on the November 2024 ballot seeking approval to change the State Constitution to allow NEAV for everyone.

## EARLY VOTING

**HB 5004 Implementing Early Voting: SUPPORT/ PASS**

Connecticut is now the 47th state in the U.S. to establish a framework for early voting. During the November 2022 election, 687,385 Connecticut citizens supported a ballot referendum to allow early voting. Public Act 23-5 was signed into law in 2023 to establish a 14-day early voting period for general elections, a 7-day period for most primaries, and a 4-day period for special elections and presidential preference primaries. This law applies to all elections held on or after January 1, 2024. It requires every municipality to establish at least one early voting location, replaces the current election-day registration option with same-day election registration, and modifies other election-related deadlines. Early voting offers citizens more opportunities to cast their ballots, shortens wait times at the polls, and allows time for election administrators to correct errors.



*Governor Ned Lamont signs An Act Implementing Early Voting.*

## DEMOCRACY & VOTING

For the second year in a row, CTLCV has tracked and scored voting rights bills. This is an area where CTLCV's mission overlaps with other areas to advance climate action, democracy, and equity. Policies that improve easy access to voting ensure that more voices are included in the democratic process. The more people vote, the more lawmakers will listen to their concerns, the more they will hear that climate justice and the environment are important issues they must address.



## RANKED CHOICE VOTING

Ranked Choice Voting (RCV) offers a myriad of benefits that have garnered support and attention in Connecticut's legislative circles. While discussions regarding its implementation have taken place in committee, progress was stalled. However, the tide appears to be shifting as Governor Lamont, a proponent of RCV, has publicly expressed support for this electoral reform.

RCV, also known as instant-runoff voting, allows voters to rank their preferred candidates in order of preference, ensuring that elected officials have broader and more representative support. This method promotes more civil and issue-focused campaigns, discourages negative campaigning, and ultimately leads to candidates who are more responsive to the diverse needs and opinions of their constituents. With the Governor's backing and growing awareness of the advantages of RCV, it is anticipated that 2024 will witness renewed momentum in Connecticut's pursuit of this progressive electoral reform.

# IMPORTANT BILLS

## NOT SCORED

### ENVIRONMENTAL RIGHTS

**HJ 37 Resolution Proposing an Amendment to the State Constitution to Provide for Environmental Rights: SUPPORT/FAIL**

HJ 37 was a resolution proposing an amendment to the CT State Constitution enshrining the rights of all people to clean and healthy air, water, and soil, a stable climate, and healthy ecosystems. The resolution would have raised environmental rights to the same level as other guaranteed rights such as freedom of speech and religion. Enshrining these rights as an amendment to the State Constitution would ensure that the government is protecting communities from toxic pollution and prioritizing environmental justice equitably across the state. HJ 37 was proposed in the Environment Committee and had a public hearing. While it did not make it any further in its first year, this is a growing national campaign that is gaining traction and support in Connecticut.

---

### SEWAGE DISPOSAL SYSTEMS

**SB 1001 Certain Sewage Disposal Systems: OPPOSE/PASS as part of SB 998**

This new law transfers the regulatory authority for the approval and permitting of Community Sewage Systems from DEEP to DPH and carries two staff positions with it. DPH has fewer environmentally protective regulations and monitoring is almost non-existent. The provisions of SB 1001 were amended to an unrelated bill, SB 998, which was originally intended to address conservation easements, but then became a vehicle for affordable housing legislation. Unfortunately, neither bill could be meaningfully scored.

### COMPOSTING

**HB 5577 Surplus Food Donation and Establishing Food Composting Requirement: SUPPORT/FAIL**

The purpose of this bill was to increase the donation of food from entities covered by Connecticut's Commercial Organics Recycling Law to support the operations of food relief organizations. HB 5577 would have diverted surplus food from stores to families that need assistance. Additionally, the bill would get organic materials out of the waste stream for composting. It required DEEP to amend regulations to add food scraps to the list of designated recyclable items and include best practices for residential customers to separate food scraps from other solid waste and recyclables.

---

### ENERGY DATA

**HB 6497 A Study of Energy Data Collection and Public Access: SUPPORT/FAIL**

This proposal was intended to guarantee public access to the data needed to set informed climate targets and accurately monitor progress against these targets. This data could include information on state-owned buildings, the number and types of cars registered in Connecticut, the number and type of renewable energy resources in the state, and individual residential electric usage. Data collection and transparency are important for communication, public awareness, and informed approaches to meeting state emissions targets.



## BLACK BEARS

### SB 1148 Authorizing Certain Killing and Hunting of Black Bear and Prohibiting Intentional Feeding

For many years, the issue of Black Bears in Connecticut has resulted in legislative battles over hunting and 2023 was no exception.

The vast majority of human-bear interactions happen when bears are attracted to garbage, bird feeders, and other easy food sources.

Until recently, DEEP has done very little public education when it comes to living with bears, and they insist that hunting is necessary to mitigate interactions. However, researchers in other states have found that hunts do not eliminate nuisance complaints because bears killed in the woods are not the same bears who are the source of complaints in more developed areas where hunting would not be safe.

DEEP already has the ability to kill bears that pose a threat, but the long-term solution is to prevent the problem of human food attractants. Wildlife advocates continue to call for conflict-reduction programs that provide funding to communities for bear-resistant trash cans and electric fencing around chickens and beehives.

Senate Bill 1148 initially authorized expansive hunting, which was stripped from the bill, but in the end the bill did nothing to address food attractants other than banning the intentional feeding of bears. As such the legislation that passed was not worth scoring.

## PUBLIC ACT 23-204

### The State Budget for the Biennium Ending June 30, 2025

Connecticut's two-year budget reflects the priorities of our state's elected leaders, and funding levels for agencies and programs has a huge impact on our state's environment. However, it is difficult to score an omnibus budget bill on any one issue.

## HOW CONNECTICUT PASSES ITS BUDGET

In odd-numbered years, the CT General Assembly passes a budget for the next two fiscal years and a two-year bond package. In even-numbered years, the General Assembly makes adjustments to the budget and bond package.

Here's an outline of how the budget gets passed.



Graphic courtesy of the CT Mirror

# 2023 LEGISLATIVE SCORECARD KEY

Lawmakers are listed alphabetically, and their votes are recorded in committees and chambers as applicable. Special elections for seats vacated during the session added new legislators and caused some changes in committee membership.

## LEGEND

Blank No vote recorded

**A** Absent or abstained

✓ Pro-environment vote

✗ Anti-environment vote

Please note: a pro-environment vote may be either a yes or no vote depending on the bill. The same is true for an anti-environment vote.

## COMMITTEE ABBREVIATIONS

**APP** Appropriations

**ED** Education

**ENV** Environment

**ET** Energy & Technology

**FIN** Finance, Revenue, & Bonding

**GAE** Government Administration & Elections

**HSG** Housing

**JUD** Judiciary

**PD** Planning & Development

**TRA** Transportation

**S** Senate

**H** House



*DEEP Commissioner Katie Dykes and Gov. Ned Lamont announce Climate Action Week*



*New laws were enacted to protect shoreline birds*



*Wildlife Rehabilitator Christine Cummings explains the threat of Rodenticides to birds of prey*

# 2023 SCORECARD: STATE SENATE

| STATE SENATOR | District # | Party | Environment Score | Democracy Score | SB 4 Energy Efficiency |          | SB 100 PFAS |          |        | SB 896 DEEP Trees |        | SB 904 Carbon/Trees |          | SB 961 Schools |        | SB 962 Rodenticides |          | SB 963 Neonicotinoids |          | SB 964 Consent Orders |          | SB 979 Buildings |          | SB 1083 Carbon Budget |         | SB 1139 MDC |          | SB 1145 Climate |       | SB 1147 EJ |       |
|---------------|------------|-------|-------------------|-----------------|------------------------|----------|-------------|----------|--------|-------------------|--------|---------------------|----------|----------------|--------|---------------------|----------|-----------------------|----------|-----------------------|----------|------------------|----------|-----------------------|---------|-------------|----------|-----------------|-------|------------|-------|
|               |            |       |                   |                 | Supp.                  | Supp.    | Supp.       | Supp.    | Supp.  | Supp.             | Supp.  | Supp.               | Supp.    | Supp.          | Supp.  | Supp.               | Supp.    | Supp.                 | Supp.    | Supp.                 | Supp.    | Supp.            | Supp.    | Supp.                 | Supp.   | Supp.       | Supp.    | Supp.           | Supp. | Supp.      | Supp. |
|               |            |       |                   |                 | HSG 3/02               | APP 5/08 | ENV 3/03    | APP 5/08 | S 5/23 | ENV 3/03          | S 5/23 | S 5/25              | ENV 3/10 | FIN 5/08       | S 5/24 | ENV 3/10            | JUD 4/19 | APP 5/01              | ENV 3/10 | APP 5/01              | ENV 3/03 | ENV 3/10         | JUD 5/03 | TRA 3/10              | PD 3/24 | ENV 3/24    | ENV 3/24 | APP 5/01        |       |            |       |
| Anwar         | 3          | D     | 95%               | 100%            |                        | ✓        | ✓           | ✓        | ✓      | ✓                 | ✓      | ✓                   | ✓        |                | ✓      | ✓                   |          | ✓                     | ✓        | ✓                     | ✗        | ✓                |          |                       |         | ✓           | ✓        | ✓               |       |            |       |
| Berthel       | 32         | R     | 67%               | 0%              |                        | ✗        |             | ✓        | ✓      |                   | ✓      | ✓                   |          |                | ✓      |                     |          | ✓                     |          | ✓                     |          |                  |          |                       |         |             |          | ✗               |       |            |       |
| Cabrera       | 17         | D     | 93%               | 100%            |                        |          |             |          | ✓      |                   | ✓      | ✓                   |          | ✓              | ✓      |                     |          |                       |          |                       |          |                  |          | ✓                     |         |             |          |                 |       |            |       |
| Cicarella     | 34         | R     | 91%               | 0%              |                        |          |             |          | ✓      |                   | ✓      | ✓                   |          |                | ✓      |                     |          |                       |          |                       |          |                  |          |                       | ✓       |             |          |                 |       |            |       |
| Cohen         | 12         | D     | 93%               | 100%            |                        |          |             |          | ✓      |                   | ✓      | ✓                   |          | ✓              | ✓      |                     |          |                       |          |                       |          |                  |          |                       | ✓       |             |          |                 |       |            |       |
| Duff          | 25         | D     | 91%               | 100%            |                        |          |             |          | ✓      |                   | ✓      | ✓                   |          |                | ✓      |                     |          |                       |          |                       |          |                  |          |                       |         |             |          |                 |       |            |       |
| Fazio         | 36         | R     | 71%               | 33%             |                        |          |             |          | ✓      |                   | ✓      | ✓                   |          | ✗              | ✓      |                     |          |                       |          |                       |          |                  |          | ✗                     | ✓       |             |          |                 |       |            |       |
| Flexer        | 29         | D     | 95%               | 100%            |                        | ✓        |             | ✓        | ✓      |                   | ✓      | ✓                   |          |                | ✓      |                     | ✓        | ✓                     |          | ✓                     |          |                  |          | A                     |         |             |          | ✓               |       |            |       |
| Fonfara       | 1          | D     | 92%               | 100%            | ✓                      |          |             |          | ✓      |                   | ✓      | A                   |          | ✓              | ✓      |                     |          |                       |          |                       |          |                  |          |                       |         |             |          |                 |       |            |       |
| Gaston        | 23         | D     | 92%               | 100%            |                        |          | ✓           |          | ✓      | ✓                 | ✓      | ✗                   | ✓        |                | ✓      | ✓                   |          |                       | ✓        |                       | ✗        | ✓                | ✓        | ✓                     | ✓       | ✓           | ✓        |                 |       |            |       |
| Gordon        | 35         | R     | 73%               | 33%             |                        | ✗        |             | ✓        | A      |                   | A      | ✓                   |          |                | ✓      |                     |          | ✓                     |          | ✓                     |          |                  |          |                       |         |             |          | ✗               |       |            |       |
| Harding       | 30         | R     | 79%               | 33%             |                        |          | ✓           |          | ✓      | ✓                 | ✓      | ✓                   | ✓        | ✓              | ✓      | ✓                   | ✓        |                       | ✓        |                       | ✗        | ✗                | ✗        |                       |         | ✗           | ✓        |                 |       |            |       |
| Hartley       | 15         | D     | 88%               | 100%            |                        | ✓        |             | ✓        | ✓      |                   | ✓      | ✓                   |          |                | ✓      |                     |          | ✓                     |          | ✓                     |          |                  |          |                       |         |             |          | ✓               |       |            |       |
| Hochadel      | 13         | D     | 95%               | 100%            | ✓                      |          | ✓           |          | ✓      | ✓                 | ✓      | ✓                   | ✓        |                | ✓      |                     |          |                       | ✓        |                       | ✗        | ✓                |          |                       | ✓       | ✓           | ✓        |                 |       |            |       |
| Hwang         | 28         | R     | 88%               | 100%            |                        |          |             |          | ✓      |                   | ✓      | ✓                   |          | ✓              | ✓      |                     |          |                       |          |                       |          |                  |          | ✓                     | ✓       |             |          |                 |       |            |       |
| Kelly         | 21         | R     | 91%               | 0%              |                        |          |             |          | ✓      |                   | ✓      | ✓                   |          |                | ✓      |                     |          |                       |          |                       |          |                  |          |                       |         |             |          |                 |       |            |       |
| Kissel        | 7          | R     | 85%               | 33%             |                        |          |             |          | ✓      |                   | ✓      | ✓                   |          |                | ✓      |                     | ✓        |                       |          |                       |          |                  |          | ✓                     |         |             |          |                 |       |            |       |
| Kushner       | 24         | D     | 94%               | 100%            |                        | ✓        |             | ✓        | ✓      |                   | ✓      | ✓                   |          |                | ✓      |                     |          | ✓                     |          | ✓                     |          |                  |          |                       |         |             |          | ✓               |       |            |       |
| Lesser        | 9          | D     | 95%               | 100%            | ✓                      | ✓        |             | ✓        | ✓      |                   | ✓      | ✓                   |          |                | ✓      |                     | ✓        | ✓                     |          | ✓                     |          |                  |          | ✓                     |         |             |          | ✓               |       |            |       |
| Looney        | 11         | D     | 91%               | 100%            |                        |          |             |          | ✓      |                   | ✓      | ✓                   |          |                | ✓      |                     |          |                       |          |                       |          |                  |          |                       |         |             |          |                 |       |            |       |
| Lopes         | 6          | D     | 95%               | 100%            |                        |          | ✓           |          | ✓      | ✓                 | ✓      | ✓                   | ✓        | ✓              | ✓      | ✓                   |          |                       | ✓        |                       | ✗        | ✓                |          | ✓                     | ✓       | ✓           | ✓        |                 |       |            |       |
| Maher         | 26         | D     | 93%               | 100%            |                        |          |             |          | ✓      |                   | ✓      | ✓                   |          |                | ✓      |                     | ✓        |                       |          |                       |          |                  | ✓        |                       |         |             |          |                 |       |            |       |
| Maroney       | 14         | D     | 86%               | 100%            |                        |          |             |          | ✓      |                   | ✓      | ✓                   |          | ✓              | ✓      |                     |          |                       |          |                       |          |                  |          |                       |         |             |          |                 |       |            |       |
| Martin        | 31         | R     | 79%               | 100%            |                        |          |             |          | ✓      |                   | ✓      | ✓                   |          | ✗              | ✓      |                     |          |                       |          |                       |          |                  |          | ✗                     |         |             |          |                 |       |            |       |
| Marx          | 20         | D     | 94%               | 100%            |                        | ✓        |             | ✓        | ✓      |                   | ✓      | ✓                   |          |                | ✓      |                     |          | ✓                     |          | ✓                     |          |                  |          |                       |         |             |          | ✓               |       |            |       |
| McCrory       | 2          | D     | 95%               | 100%            |                        | ✓        |             | ✓        | ✓      |                   | ✓      | ✓                   |          |                | ✓      |                     |          | ✓                     |          | ✓                     |          |                  |          |                       |         |             |          | ✓               |       |            |       |
| Miller        | 27         | D     | 94%               | 100%            |                        |          |             |          | ✓      |                   | ✓      | ✓                   |          |                | ✓      |                     | ✓        |                       |          |                       |          |                  |          | ✓                     |         |             |          |                 |       |            |       |
| Moore         | 22         | D     | 86%               | 100%            | ✓                      |          |             |          | ✓      |                   | ✓      | ✗                   |          | ✓              | ✓      |                     |          |                       |          |                       |          |                  |          |                       |         |             |          |                 |       |            |       |
| Needleman     | 33         | D     | 94%               | 100%            |                        |          |             |          | ✓      |                   | ✓      | ✓                   |          |                | ✓      |                     |          |                       |          |                       |          |                  |          | ✓                     | ✓       |             |          |                 |       |            |       |
| Osten         | 19         | D     | 94%               | 100%            |                        | ✓        |             | ✓        | ✓      |                   | ✓      | ✓                   |          |                | ✓      |                     |          | ✓                     |          | ✓                     |          |                  |          | ✓                     |         |             |          | ✓               |       |            |       |
| Rahman        | 4          | D     | 93%               | 100%            |                        |          |             |          | ✓      |                   | ✓      | ✓                   |          | ✓              | ✓      |                     |          |                       |          |                       |          |                  |          |                       | ✓       |             |          |                 |       |            |       |
| Sampson       | 16         | R     | 60%               | 0%              | ✗                      |          |             |          | ✓      |                   | ✓      | ✓                   |          |                | ✓      |                     | ✓        |                       |          |                       |          |                  |          | ✗                     |         |             |          |                 |       |            |       |
| Seminara      | 8          | R     | 83%               | 0%              |                        |          |             |          | ✓      |                   | ✓      | ✓                   |          |                | ✓      |                     |          |                       |          |                       |          |                  |          |                       |         |             |          |                 |       |            |       |
| Slap          | 5          | D     | 94%               | 100%            |                        | ✓        |             | ✓        | ✓      |                   | ✓      | ✓                   |          |                | ✓      |                     |          | ✓                     |          | ✓                     |          |                  |          |                       |         |             |          | ✓               |       |            |       |
| Somers        | 18         | R     | 82%               | 50%             |                        | ✗        |             | ✓        | ✓      |                   | ✓      | ✓                   |          |                | ✓      |                     |          | ✓                     |          | ✓                     |          |                  |          |                       |         |             |          | ✓               |       |            |       |
| Winfield      | 10         | D     | 95%               | 100%            |                        | ✓        |             | ✓        | ✓      |                   | ✓      | ✓                   |          |                | ✓      |                     | ✓        | ✓                     |          | ✓                     |          |                  | ✓        |                       |         |             |          | ✓               |       |            |       |



# 2023 SCORECARD: STATE HOUSE

| STATE REP.     | District # | Party | Environment Score | Democracy Score | SB 4 Energy Efficiency |             | SB 100 PFAS |             |           | SB 896 DEEP Trees |           | SB 904 Carbon/Trees |             | SB 961 Schools |             | SB 962 Rodenticides |             | SB 963 Neonicotinoids |             | SB 964 Consent Orders | SB 979 Buildings |             | SB 1083 Carbon Budget | SB 1139 MDC | SB 1145 Climate |             | SB 1147 EU  |           |       |       |       |
|----------------|------------|-------|-------------------|-----------------|------------------------|-------------|-------------|-------------|-----------|-------------------|-----------|---------------------|-------------|----------------|-------------|---------------------|-------------|-----------------------|-------------|-----------------------|------------------|-------------|-----------------------|-------------|-----------------|-------------|-------------|-----------|-------|-------|-------|
|                |            |       |                   |                 | Supp.                  | Supp.       | Supp.       | Supp.       | Supp.     | Supp.             | Supp.     | Supp.               | Supp.       | Supp.          | Supp.       | Supp.               | Supp.       | Supp.                 | Supp.       | Supp.                 | Supp.            | Supp.       | Supp.                 | Supp.       | Supp.           | Supp.       | Supp.       | Supp.     | Supp. | Supp. | Supp. |
|                |            |       |                   |                 | HSG<br>3/02            | APP<br>5/08 | ENV<br>3/03 | APP<br>5/08 | H<br>6/02 | ENV<br>3/03       | H<br>6/07 | H<br>6/06           | ENV<br>3/10 | FIN<br>5/08    | ENV<br>3/10 | JUD<br>4/19         | APP<br>5/01 | ENV<br>3/10           | APP<br>5/01 | ENV<br>3/03           | ENV<br>3/10      | JUD<br>5/03 | TRA<br>3/10           | PD<br>3/24  | ENV<br>3/24     | ENV<br>3/24 | APP<br>5/01 | H<br>6/07 |       |       |       |
| Ackert         | 8          | R     | 65%               | 100%            |                        |             |             |             | ✓         |                   | ✓         | ✓                   |             |                |             |                     |             |                       |             |                       |                  |             |                       |             |                 |             |             |           | ✗     |       |       |
| Allie-Brennan  | 2          | D     | 88%               | 100%            |                        |             |             |             | ✓         |                   | ✓         | ✓                   |             |                |             |                     |             |                       |             |                       |                  |             |                       |             |                 |             |             |           | ✓     |       |       |
| Anderson       | 62         | R     | 62%               | 0%              |                        |             | ✓           |             | ✓         | ✓                 | ✓         | ✓                   | ✗           |                | ✓           |                     |             |                       | ✗           |                       | ✗                | ✗           |                       |             |                 | ✗           | ✓           | ✓         |       |       |       |
| Aniskovich     | 35         | R     | 50%               | 50%             |                        |             |             |             | ✓         |                   | ✓         | ✓                   |             |                |             |                     |             |                       |             |                       |                  |             |                       |             |                 |             |             |           | ✗     |       |       |
| Arnone         | 58         | D     | 81%               | 100%            |                        |             |             |             | ✓         |                   | ✓         | ✓                   |             |                |             |                     |             |                       |             |                       |                  |             |                       |             |                 |             |             |           | ✓     |       |       |
| Arzeno         | 151        | D     | 95%               | 100%            |                        |             | ✓           |             | ✓         | ✓                 | ✓         | ✓                   | ✓           |                | ✓           |                     |             | ✓                     |             | ✓                     | ✓                |             |                       |             |                 | ✓           | ✓           | ✓         |       |       |       |
| Baker          | 124        | D     | 96%               | 100%            |                        | ✓           |             | ✓           | ✓         |                   | ✓         | ✓                   |             |                |             | ✓                   |             | ✓                     |             |                       |                  |             | ✓                     |             |                 |             | ✓           | ✓         |       |       |       |
| Barry          | 31         | D     | 88%               | 100%            |                        |             |             |             | ✓         |                   | ✓         | ✓                   |             | ✗              |             |                     |             |                       |             |                       |                  |             |                       |             |                 |             |             |           | ✓     |       |       |
| Belton         | 100        | D     | 88%               | 100%            |                        |             |             |             | ✓         |                   | ✓         | ✓                   |             |                |             |                     |             |                       |             |                       |                  |             |                       |             |                 |             |             |           | ✓     |       |       |
| Berger-Girvalo | 111        | D     | 94%               | 100%            |                        |             |             |             | ✓         |                   | ✓         | ✓                   |             |                |             |                     |             |                       |             |                       |                  |             |                       | ✓           |                 |             |             |           | ✓     |       |       |
| Blumenthal     | 147        | D     | 90%               | 100%            |                        |             |             |             | ✓         |                   | ✓         | ✓                   |             |                | ✓           |                     |             |                       |             |                       |                  | ✓           | ✓                     |             |                 |             |             |           | ✓     |       |       |
| Bolinsky       | 106        | R     | 61%               | 50%             |                        | ✗           |             | ✓           | ✓         |                   | ✓         | ✓                   |             |                |             | ✓                   |             | ✓                     |             |                       |                  |             |                       |             |                 |             |             | ✗         | ✗     |       |       |
| Borer          | 115        | D     | 94%               | 100%            |                        |             |             |             | ✓         |                   | ✓         | ✓                   |             |                |             |                     |             |                       |             |                       |                  |             |                       |             |                 |             |             |           | ✓     |       |       |
| Boyd           | 50         | D     | 87%               | 100%            |                        |             |             |             | ✓         |                   | ✓         | ✓                   |             |                |             |                     |             |                       |             |                       |                  |             |                       |             |                 |             |             |           | ✓     |       |       |
| Bronko         | 70         | R     | 50%               | 0%              |                        |             |             |             | ✓         |                   | ✓         | ✓                   |             | ✗              |             |                     |             |                       |             |                       |                  |             |                       | ✗           |                 |             |             |           | ✓     |       |       |
| Brown, K.      | 56         | D     | 89%               | 100%            | ✓                      |             |             |             | ✓         |                   | ✓         | ✓                   |             |                |             |                     |             |                       |             |                       |                  |             |                       |             |                 |             |             |           | ✓     |       |       |
| Brown, M.      | 127        | D     | 89%               | 100%            |                        |             |             |             | ✓         |                   | ✓         | ✓                   |             | ✓              |             |                     |             |                       |             |                       |                  |             |                       |             |                 |             |             |           | ✓     |       |       |
| Buckbee        | 67         | R     | 65%               | 0%              |                        |             |             |             | ✓         |                   | ✓         | ✓                   |             |                |             |                     |             |                       |             |                       |                  |             |                       |             |                 |             |             |           | ✓     |       |       |
| Bumgardner     | 41         | D     | 98%               | 100%            |                        |             | ✓           |             | ✓         | ✓                 | ✓         | ✓                   | ✓           | ✓              | ✓           |                     | ✓           |                       | ✓           | ✓                     |                  |             |                       | ✓           | ✓               | ✓           |             |           | ✓     |       |       |
| Butler         | 72         | D     | 89%               | 100%            | ✓                      |             |             |             | ✓         |                   | ✓         | ✓                   |             | ✓              |             |                     |             |                       |             |                       |                  |             |                       |             |                 |             |             |           | ✓     |       |       |
| Callahan       | 108        | R     | 60%               | 0%              |                        | ✗           | ✓           | ✓           | ✓         | ✓                 | ✓         | ✓                   | ✗           |                | ✓           | ✓                   | ✓           | ✗                     | ✗           | ✗                     | ✗                | ✗           | ✗                     |             |                 | ✗           | ✓           | ✗         | ✓     |       |       |
| Candelaria     | 95         | D     | 96%               | 100%            |                        | ✓           |             | ✓           | ✓         |                   | ✓         | ✓                   |             |                | ✓           |                     | ✓           |                       |             |                       |                  |             |                       |             |                 |             |             | ✓         | ✓     |       |       |
| Candelora      | 86         | R     | 50%               | 0%              |                        |             |             |             | ✓         |                   | ✓         | ✓                   |             |                |             |                     |             |                       |             |                       |                  |             |                       |             |                 |             |             |           | ✗     |       |       |
| Carney         | 23         | R     | 95%               | 50%             |                        |             |             |             | ✓         |                   | ✓         | ✓                   |             | ✓              |             |                     |             |                       |             |                       |                  |             |                       | ✓           |                 |             |             |           | ✓     |       |       |
| Carpino        | 32         | R     | 59%               | 50%             |                        |             |             |             | ✓         |                   | ✓         | ✓                   |             |                |             |                     |             |                       |             |                       |                  |             |                       |             |                 |             |             |           | ✓     |       |       |
| Case           | 63         | R     | 56%               | 0%              |                        |             |             |             | ✓         |                   | ✓         | ✓                   |             |                |             |                     |             |                       |             |                       |                  |             |                       |             |                 |             |             |           | ✗     |       |       |
| Chafee         | 33         | D     | 98%               | 100%            |                        |             | ✓           |             | ✓         | ✓                 | ✓         | ✓                   | ✓           |                | ✓           |                     | ✓           |                       | ✓           | ✓                     |                  |             | ✓                     | ✓           | ✓               |             |             |           | ✓     |       |       |
| Chaleski       | 138        | R     | 63%               | 100%            |                        | ✗           |             | ✓           | ✓         |                   | ✓         | ✓                   |             |                | ✓           |                     | ✗           |                       |             |                       |                  |             | ✓                     |             |                 |             |             | ✓         | ✓     |       |       |
| Cheeseman      | 37         | R     | 58%               | 100%            |                        |             |             |             | ✓         |                   | ✓         | ✓                   |             | ✗              |             |                     |             |                       |             |                       |                  |             |                       |             |                 |             |             |           | ✗     |       |       |
| Comey          | 102        | D     | 92%               | 100%            |                        |             |             |             | ✓         |                   | ✓         | ✓                   |             |                |             |                     |             |                       |             |                       |                  |             |                       |             |                 |             |             |           | ✓     |       |       |
| Concepcion     | 4          | D     | 89%               | 100%            |                        |             |             |             | ✓         |                   | ✓         | ✓                   |             | ✓              |             |                     |             |                       |             |                       |                  |             |                       | ✓           |                 |             |             |           | ✓     |       |       |
| Conley         | 40         | D     | 90%               | 100%            |                        |             |             |             | ✓         |                   | ✓         | ✓                   |             |                | ✓           |                     |             |                       |             |                       |                  | ✓           | ✓                     | ✓           |                 |             |             |           | ✓     |       |       |
| Cook           | 65         | D     | 82%               | 100%            |                        |             |             |             | ✓         |                   | ✓         | ✓                   |             |                |             |                     |             |                       |             |                       |                  |             |                       |             |                 |             |             |           | ✓     |       |       |
| Cooly          | 22         | R     | 60%               | 0%              |                        |             | ✓           |             | ✓         | ✓                 | ✓         | ✓                   | ✗           |                | ✓           |                     | ✓           |                       | ✗           | ✗                     |                  |             |                       |             |                 | ✗           | ✗           |           | ✗     |       |       |
| Currey         | 11         | D     | 92%               | 100%            |                        | ✓           |             | ✓           | ✓         |                   | ✓         | ✓                   |             |                | ✓           | ✓                   |             | ✓                     |             |                       |                  | ✓           |                       |             |                 |             |             | ✓         | ✓     |       |       |
| D'Agostino     | 91         | D     | 89%               | 100%            |                        |             |             |             | ✓         |                   | ✓         | ✓                   |             |                |             |                     |             |                       |             |                       |                  |             |                       | ✓           |                 |             |             |           | ✓     |       |       |
| Dancho         | 120        | R     | 68%               | 50%             |                        |             | ✓           |             | ✓         | ✓                 | ✓         | ✓                   | ✗           | ✗              | ✓           |                     | ✓           |                       | ✗           | ✗                     |                  |             | ✓                     |             | ✗               | ✓           |             |           | ✓     |       |       |
| Dathan         | 142        | D     | 91%               | 100%            |                        | ✓           |             | ✓           | ✓         |                   | ✓         | ✓                   |             |                | ✓           |                     | ✓           |                       |             |                       |                  |             |                       |             |                 |             |             | ✓         | ✓     |       |       |





| STATE REP.    | District # | Party | Environment Score | Democracy Score | SB 4 Energy Efficiency |          | SB 100 PFAS |          | SB 896 DEEP Trees |          | SB 904 Carbon/Trees | SB 961 Schools |          | SB 962 Rodenticides |          | SB 963 Neonicotinoids |          | SB 964 Consent Orders | SB 979 Buildings |          | SB 1083 Carbon Budget |          | SB 1139 MDC | SB 1145 Climate |          | SB 1147 EJ |          |        |       |       |   |   |
|---------------|------------|-------|-------------------|-----------------|------------------------|----------|-------------|----------|-------------------|----------|---------------------|----------------|----------|---------------------|----------|-----------------------|----------|-----------------------|------------------|----------|-----------------------|----------|-------------|-----------------|----------|------------|----------|--------|-------|-------|---|---|
|               |            |       |                   |                 | Supp.                  | Supp.    | Supp.       | Supp.    | Supp.             | Supp.    | Supp.               | Supp.          | Supp.    | Supp.               | Supp.    | Supp.                 | Supp.    | Supp.                 | Supp.            | Supp.    | Supp.                 | Supp.    | Supp.       | Supp.           | Supp.    | Supp.      | Supp.    | Supp.  | Supp. | Supp. |   |   |
|               |            |       |                   |                 | HSG 3/02               | APP 5/08 | ENV 3/03    | APP 5/08 | H 6/02            | ENV 3/03 | H 6/07              | H 6/06         | ENV 3/10 | FIN 5/08            | ENV 3/10 | JUD 4/19              | APP 5/01 | ENV 3/10              | APP 5/01         | ENV 3/03 | ENV 3/10              | JUD 5/03 | TRA 3/10    | PD 3/24         | ENV 3/24 | ENV 3/24   | APP 5/01 | H 6/07 |       |       |   |   |
| Dauphinais    | 44         | R     | 44%               | 0%              |                        |          |             |          | ✓                 |          | ✓                   |                |          |                     |          |                       |          |                       |                  |          |                       |          |             |                 |          |            |          | ✗      |       |       |   |   |
| DeCaprio      | 48         | R     | 43%               | 0%              |                        | ✗        |             | ✓        | ✓                 |          | ✓                   | ✓              |          |                     |          |                       | ✓        |                       |                  |          |                       |          | ✗           |                 |          |            |          | ✗      | ✗     |       |   |   |
| Delany        | 144        | D     | 94%               | 100%            |                        | ✓        |             | ✓        | A                 |          | ✓                   | ✓              |          |                     | ✓        |                       | ✓        |                       |                  |          | ✓                     |          |             |                 |          |            |          | ✓      | ✓     |       |   |   |
| Delnicki      | 14         | R     | 71%               | 100%            |                        | ✗        |             | ✓        | ✓                 |          | ✓                   | ✓              |          |                     |          |                       | ✓        |                       |                  |          |                       |          | ✓           |                 |          |            |          | ✓      | ✓     |       |   |   |
| Demicco       | 21         | D     | 98%               | 100%            |                        |          | ✓           |          | ✓                 | ✓        | ✓                   | ✓              |          |                     | ✓        |                       | ✓        |                       | ✓                | ✓        |                       |          |             |                 | ✓        | ✓          |          | ✓      | ✓     |       |   |   |
| Denning       | 42         | D     | 88%               | 100%            |                        |          |             |          | ✓                 |          | ✓                   | ✓              |          |                     |          |                       |          |                       |                  |          |                       |          | ✓           |                 |          |            |          |        | ✓     | ✓     |   |   |
| DiGiovancarlo | 74         | D     | 80%               | 100%            |                        |          |             |          | ✓                 |          | ✓                   | ✓              |          |                     |          |                       |          |                       |                  |          |                       |          |             |                 |          |            |          |        | ✓     | ✓     |   |   |
| Dillon        | 92         | D     | 93%               | 100%            |                        | ✓        | ✓           | ✓        | ✓                 | ✓        | ✓                   | ✓              |          |                     | ✓        | ✓                     | ✓        | ✓                     | ✓                | ✓        |                       | A        |             |                 | ✓        | ✓          | ✓        | ✓      | ✓     | ✓     |   |   |
| Doucette      | 13         | D     | 95%               | 100%            |                        |          |             |          | ✓                 |          | ✓                   | ✓              |          |                     | ✓        |                       |          |                       |                  |          |                       |          |             |                 |          |            |          |        | ✓     | ✓     |   |   |
| Dubitsky      | 47         | R     | 51%               | 0%              |                        |          | ✓           |          | ✓                 | ✓        | ✗                   | ✓              | ✗        |                     | ✓        | ✓                     |          | ✗                     |                  | ✗        | ✗                     | ✗        | ✗           |                 | ✓        | ✗          | ✗        |        | ✗     | ✗     |   |   |
| Elliott       | 88         | D     | 90%               | 100%            |                        |          |             |          | ✓                 |          | ✓                   | ✓              |          |                     | ✓        |                       |          |                       |                  |          |                       |          |             |                 |          |            |          |        | ✓     | ✓     |   |   |
| Exum          | 19         | D     | 95%               | 100%            |                        | ✓        |             | ✓        | ✓                 |          | ✓                   | ✓              |          |                     |          |                       | ✓        |                       |                  |          |                       |          |             |                 |          |            |          |        | ✓     | ✓     |   |   |
| Farrar        | 20         | D     | 95%               | 100%            |                        |          |             |          | ✓                 |          | ✓                   | ✓              |          |                     | ✓        |                       |          |                       |                  |          |                       |          |             |                 |          |            |          |        | ✓     | ✓     |   |   |
| Fazzino       | 83         | D     | 88%               | 100%            |                        |          |             |          | ✓                 |          | ✓                   | ✓              |          |                     | ✓        |                       |          |                       |                  |          |                       |          |             |                 |          |            |          |        | ✓     | ✓     |   |   |
| Felipe        | 130        | D     | 96%               | 100%            |                        | ✓        | ✓           | ✓        | ✓                 | ✓        | ✓                   | ✓              |          |                     | ✓        | ✓                     | ✓        | ✓                     | ✓                | ✓        |                       |          |             |                 |          |            |          |        | ✓     | ✓     |   |   |
| Ferraro       | 117        | R     | 59%               | 0%              |                        |          |             |          | ✓                 |          | ✓                   | ✓              |          |                     |          |                       |          |                       |                  |          |                       |          |             |                 |          |            |          |        |       | ✗     | ✗ |   |
| Figueroa      | 148        | D     | 88%               | 100%            |                        |          |             |          | ✓                 |          | ✓                   | ✓              |          |                     |          |                       |          |                       |                  |          |                       |          |             |                 |          |            |          |        |       | ✓     | ✓ |   |
| Fishbein      | 90         | R     | 50%               | 50%             |                        |          |             |          | ✓                 |          | ✓                   | ✓              |          |                     | ✓        |                       |          |                       |                  |          |                       |          |             |                 |          |            |          |        |       | ✗     | ✗ |   |
| Foncello      | 107        | R     | 57%               | 50%             |                        | ✗        |             | ✓        | ✓                 |          | ✓                   | ✓              |          |                     |          | ✓                     |          | ✓                     |                  |          |                       |          |             |                 |          |            |          |        |       | ✗     | ✗ |   |
| Fortier       | 79         | D     | 88%               | 100%            |                        |          |             |          | ✓                 |          | ✓                   | ✓              |          |                     |          |                       |          |                       |                  |          |                       |          |             |                 |          |            |          |        |       | ✓     | ✓ |   |
| Foster        | 57         | D     | 94%               | 100%            |                        |          |             |          | ✓                 |          | ✓                   | ✓              |          |                     |          |                       |          |                       |                  |          |                       |          |             |                 |          |            |          |        |       | ✓     | ✓ |   |
| Garibay       | 60         | D     | 91%               | 100%            |                        | ✓        |             | ✓        | ✓                 |          | ✓                   | ✓              |          |                     |          | ✓                     |          | ✓                     |                  |          |                       |          |             |                 |          |            |          |        |       | ✓     | ✓ |   |
| Gee           | 126        | D     | 89%               | 100%            |                        |          |             |          | ✓                 |          | ✓                   | ✓              |          |                     | ✓        |                       |          |                       |                  |          |                       |          |             |                 |          |            |          |        |       | ✓     | ✓ |   |
| Genga         | 10         | D     | 88%               | 100%            |                        |          |             |          | ✓                 |          | ✓                   | ✓              |          |                     |          |                       |          |                       |                  |          |                       |          |             |                 |          |            |          |        |       | ✓     | ✓ |   |
| Gibson        | 15         | D     | 95%               | 100%            |                        | ✓        |             | ✓        | ✓                 |          | ✓                   | ✓              |          |                     |          | ✓                     |          | ✓                     |                  |          |                       |          |             |                 |          |            |          |        |       | ✓     | ✓ |   |
| Gilchrest     | 18         | D     | 90%               | 100%            |                        | ✓        |             | ✓        | A                 |          | ✓                   | ✓              |          |                     |          | ✓                     |          | ✓                     |                  |          |                       |          |             |                 |          |            |          |        |       | ✓     | ✓ |   |
| Godfrey       | 110        | D     | 83%               | 100%            |                        |          |             |          | ✓                 |          | ✓                   | ✓              |          |                     | ✓        |                       |          |                       |                  |          |                       |          |             |                 |          |            |          |        |       | ✓     | ✓ |   |
| Gonzalez      | 3          | D     | 87%               | 100%            | ✓                      | ✓        |             | ✓        | ✓                 |          | ✓                   | ✓              |          |                     |          | ✓                     |          | ✓                     |                  |          |                       |          |             |                 |          |            |          |        |       | ✓     | ✓ |   |
| Gresko        | 121        | D     | 93%               | 100%            |                        |          | ✓           |          | ✓                 | ✓        | ✓                   | ✓              |          |                     | ✓        |                       |          | ✗                     |                  | ✓        |                       |          |             |                 |          |            |          |        |       | ✓     | ✓ |   |
| Haddad        | 54         | D     | 91%               | 100%            |                        | ✓        |             | ✓        | ✓                 |          | ✓                   | ✓              |          |                     |          | ✓                     |          | ✓                     |                  |          |                       |          |             |                 |          |            |          |        |       | ✓     | ✓ |   |
| Haines        | 34         | R     | 47%               | 100%            |                        |          |             |          | ✓                 |          | ✓                   | ✓              |          |                     |          |                       |          |                       |                  |          |                       |          |             |                 |          |            |          |        |       |       | ✗ | ✗ |
| Hall, J.      | 7          | D     | 100%              | 100%            |                        | ✓        |             | ✓        | ✓                 |          | ✓                   | ✓              |          |                     | ✓        |                       |          | A                     |                  |          |                       |          |             |                 |          |            |          |        | A     | ✓     | ✓ |   |
| Hall, C.      | 59         | R     | 60%               | 0%              |                        |          |             |          | ✓                 |          | ✓                   | ✓              |          |                     | ✓        |                       |          |                       |                  |          |                       |          |             |                 |          |            |          |        |       |       | ✗ | ✗ |
| Harrison      | 69         | R     | 62%               | 50%             |                        | ✗        | ✓           | ✓        | ✓                 | ✓        | ✓                   | ✓              |          |                     | ✓        |                       | ✓        | ✓                     | ✗                | ✗        | ✗                     |          |             |                 |          |            |          |        | ✗     | ✗     | ✗ | ✗ |
| Hayes         | 51         | R     | 56%               | 0%              |                        |          |             |          | ✓                 |          | ✓                   | ✓              |          |                     |          | ✓                     |          |                       |                  |          |                       |          |             |                 |          |            |          |        |       |       | ✗ | ✗ |
| Horn          | 64         | D     | 95%               | 100%            |                        |          | ✓           |          | ✓                 | ✓        | ✓                   | ✓              |          |                     | ✓        |                       |          | ✓                     |                  | ✓        | ✓                     |          |             |                 |          |            |          |        |       | ✓     | ✓ |   |
| Howard        | 43         | R     | 58%               | 50%             |                        |          |             |          | ✓                 |          | ✓                   | ✓              |          |                     | ✓        |                       |          |                       |                  |          |                       |          |             |                 |          |            |          |        |       |       | ✗ | ✗ |
| Hoxha         | 78         | R     | 48%               | 0%              |                        | ✗        |             | ✓        | ✓                 |          | ✓                   | ✓              |          |                     |          | ✓                     |          | ✗                     |                  |          |                       |          |             |                 |          |            |          |        |       |       | ✗ | ✗ |
| Hughes        | 135        | D     | 94%               | 100%            |                        |          |             |          | ✓                 |          | ✓                   | ✓              |          |                     |          |                       |          |                       |                  |          |                       |          |             |                 |          |            |          |        |       |       | ✓ | ✓ |
| Johnson, D.   | 143        | D     | 95%               | 100%            |                        |          |             |          | ✓                 |          | ✓                   | ✓              |          |                     |          | ✓                     |          |                       |                  |          |                       |          |             |                 |          |            |          |        |       |       | ✓ | ✓ |
| Johnson, S.   | 49         | D     | 91%               | 100%            |                        | ✓        |             | ✓        | ✓                 |          | ✓                   | ✓              |          |                     |          | ✓                     |          | ✓                     |                  |          |                       |          |             |                 |          |            |          |        |       |       | ✓ | ✓ |
| Kavros DeGraw | 17         | D     | 95%               | 100%            |                        |          |             |          | ✓                 |          | ✓                   | ✓              |          |                     | ✓        |                       |          |                       |                  |          |                       |          |             |                 |          |            |          |        |       |       | ✓ | ✓ |







| STATE REP.  | District # | Party | Environment Score | Democracy Score | SB 4 Energy Efficiency |             | SB 100 PFAS |             |           | SB 896 DEEP Trees |           | SB 904 Carbon/Trees |             | SB 961 Schools |             | SB 962 Rodenticides |             | SB 963 Neonicotinoids |             | SB 964 Consent Orders | SB 979 Buildings |             | SB 1083 Carbon Budget | SB 1139 MDC | SB 1145 Climate |             | SB 1147 EJ  |           |       |       |       |
|-------------|------------|-------|-------------------|-----------------|------------------------|-------------|-------------|-------------|-----------|-------------------|-----------|---------------------|-------------|----------------|-------------|---------------------|-------------|-----------------------|-------------|-----------------------|------------------|-------------|-----------------------|-------------|-----------------|-------------|-------------|-----------|-------|-------|-------|
|             |            |       |                   |                 | Supp.                  | Supp.       | Supp.       | Supp.       | Supp.     | Supp.             | Supp.     | Supp.               | Supp.       | Supp.          | Supp.       | Supp.               | Supp.       | Supp.                 | Supp.       | Supp.                 | Supp.            | Supp.       | Supp.                 | Supp.       | Supp.           | Supp.       | Supp.       | Supp.     | Supp. | Supp. | Supp. |
|             |            |       |                   |                 | HSG<br>3/02            | APP<br>5/08 | ENV<br>3/03 | APP<br>5/08 | H<br>6/02 | ENV<br>3/03       | H<br>6/07 | H<br>6/06           | ENV<br>3/10 | FIN<br>5/08    | ENV<br>3/10 | JUD<br>4/19         | APP<br>5/01 | ENV<br>3/10           | APP<br>5/01 | ENV<br>3/03           | ENV<br>3/10      | JUD<br>5/03 | TRA<br>3/10           | PD<br>3/24  | ENV<br>3/24     | ENV<br>3/24 | APP<br>5/01 | H<br>6/07 |       |       |       |
| Sanchez, E. | 24         | D     | 91%               | 100%            |                        | ✓           |             | ✓           | ✓         |                   |           | ✓                   | ✓           |                |             |                     |             | ✓                     | ✓           |                       |                  |             |                       |             |                 |             | ✓           | ✓         |       |       |       |
| Sanchez, J. | 6          | D     | 96%               | 100%            |                        |             |             |             | ✓         | ✓                 |           |                     | ✓           | ✓              |             | ✓                   |             |                       |             |                       | ✓                |             |                       |             |                 | ✓           | ✓           | ✓         |       |       |       |
| Sanchez, R. | 25         | D     | 88%               | 100%            |                        |             |             |             | ✓         | ✓                 |           |                     | ✓           | ✓              |             | ✓                   |             |                       |             |                       |                  |             |                       |             |                 | ✓           | ✓           | ✓         |       |       |       |
| Santiago    | 84         | D     | 84%               | 100%            |                        |             |             |             | ✓         | ✓                 |           |                     | ✓           | ✓              |             | ✓                   |             |                       |             |                       |                  |             |                       |             |                 |             |             | ✓         |       |       |       |
| Santos      | 109        | D     | 94%               | 100%            |                        |             |             |             | ✓         | ✓                 |           |                     | ✓           | ✓              |             |                     |             |                       |             |                       |                  |             |                       |             |                 |             |             | ✓         |       |       |       |
| Scott       | 112        | R     | 59%               | 50%             | ✗                      |             |             |             | ✓         | ✓                 |           |                     | ✓           | ✓              |             |                     |             |                       |             |                       |                  |             |                       |             |                 |             |             | ✗         |       |       |       |
| Simms       | 140        | D     | 96%               | 100%            |                        | ✓           |             | ✓           | ✓         |                   |           |                     | ✓           | ✓              |             | ✓                   | ✓           |                       |             |                       |                  | ✓           | ✓                     |             |                 |             | ✓           | ✓         |       |       |       |
| Smith       | 118        | D     | 95%               | 100%            |                        |             | ✓           |             | ✓         | ✓                 |           |                     | ✓           | ✓              | A           |                     | A           |                       | ✓           | ✓                     |                  | ✓           | ✓                     |             |                 | ✓           | ✓           | ✓         |       |       |       |
| Stafstrom   | 129        | D     | 90%               | 100%            |                        |             |             |             | ✓         | ✓                 |           |                     | ✓           | ✓              |             | ✓                   |             |                       |             |                       |                  |             | ✓                     |             |                 |             |             | ✓         |       |       |       |
| Steinberg   | 136        | D     | 94%               | 100%            |                        |             |             |             | ✓         | ✓                 |           |                     | ✓           | ✓              |             |                     |             |                       |             |                       |                  |             |                       | ✓           |                 |             |             | ✓         |       |       |       |
| Tercyak     | 26         | D     | 86%               | 100%            |                        | ✓           |             | ✓           | ✓         |                   |           |                     | ✓           | ✓              |             |                     | ✓           |                       |             |                       |                  |             |                       |             |                 |             | ✓           | ✓         |       |       |       |
| Turco       | 27         | D     | 94%               | 100%            |                        |             |             |             | ✓         | ✓                 |           |                     | ✓           | ✓              |             |                     |             |                       |             |                       |                  |             |                       | ✓           |                 |             |             | ✓         |       |       |       |
| Vail        | 52         | R     | 60%               | 0%              |                        |             |             |             | ✓         | ✓                 |           |                     | ✓           | ✓              |             |                     |             |                       |             |                       |                  |             |                       |             |                 |             |             | ✗         |       |       |       |
| Veach       | 30         | R     | 51%               | 0%              |                        |             | ✓           |             | ✓         | ✓                 |           |                     | ✓           | ✓              |             | ✗                   |             | ✗                     | ✗           | ✗                     |                  |             |                       |             | ✗               | ✓           |             | ✗         |       |       |       |
| Walker      | 93         | D     | 95%               | 100%            |                        | ✓           |             | ✓           | ✓         |                   |           |                     | ✓           | ✓              |             | ✓                   | ✓           |                       |             |                       |                  | ✓           |                       |             |                 |             | ✓           | ✓         |       |       |       |
| Weir        | 55         | R     | 47%               | 0%              | ✗                      |             |             |             | ✓         | ✓                 |           |                     | ✓           | ✓              |             |                     |             |                       |             |                       |                  |             |                       |             |                 |             |             | ✗         |       |       |       |
| Welander    | 114        | D     | 85%               | 100%            |                        |             |             |             | ✓         | ✓                 |           |                     | ✓           | ✓              |             |                     |             |                       |             |                       |                  |             |                       |             |                 |             |             | ✓         |       |       |       |
| Wilson      | 46         | D     | 90%               | 100%            |                        |             |             |             | ✓         | ✓                 |           |                     | ✓           | ✓              |             | ✓                   |             |                       |             |                       |                  |             | ✓                     |             |                 |             |             | ✓         |       |       |       |
| Wood        | 29         | D     | 83%               | 100%            |                        |             |             |             | ✓         | ✓                 |           |                     | ✓           | ✓              |             | ✗                   |             |                       |             |                       |                  |             |                       |             |                 |             |             | ✓         |       |       |       |
| Yaccarino   | 87         | R     | 56%               | 50%             |                        |             |             |             | ✓         | ✓                 |           |                     | ✓           | ✓              |             | ✗                   |             |                       |             |                       |                  |             |                       |             |                 |             |             | ✗         |       |       |       |
| Zawistowski | 61         | R     | 44%               | 0%              |                        | ✗           |             | ✓           | ✓         |                   |           |                     | ✓           | ✓              |             |                     |             | ✗                     |             |                       |                  |             | ✗                     | ✓           |                 |             | ✗           | ✗         |       |       |       |
| Zullo       | 99         | R     | 50%               | 100%            | ✗                      |             |             |             | ✓         | ✓                 |           |                     | ✓           | ✓              |             | ✗                   |             |                       |             |                       |                  |             |                       | ✓           |                 |             |             | ✓         |       |       |       |
| Zupkus      | 89         | R     | 50%               | 0%              |                        |             |             |             | ✓         | ✓                 |           |                     | ✓           | ✓              |             | ✗                   |             |                       |             |                       |                  |             |                       |             |                 |             |             | ✗         |       |       |       |

## Remembrance and Gratitude



**Quentin Williams**  
1983 – 2023

Representative Quentin Williams was one of the most outgoing and inspiring legislators ever to serve our state. His dedication to the people in his district and his tireless enthusiasm for the endless work of a state lawmaker were undeniable. We should all aspire to follow his example as a true leader for the values of kindness and integrity that he showed us every day. We miss you, Q!

| SB 1236 Bottle Bill |          | HB 5602 Seismic |          | HB 6397 Climate Roadmap |          | HB 6480 Eel Grass |          | HB 6481 Balloons |          | HB 6482 Trails Funding |          | HB 6483 Open Space Funding |          | HB 6484 Horseshoe Crabs |                | HB 6485 Buriats |          | HB 6486 Tire EPR |          | HB 6606 Polystyrene |          | HB 6607 Light Pollution |        | HB 6608 Plastics |         | HB 6647 Plan of C&D |        | HB 6664 Waste |        | HB 6764 Solar |        | HB 6809 River Buffers |        | HB 6813 Shorebirds |       | HB 5004 Early Voting |       | HJ 1 Absentee Voting |   |   |
|---------------------|----------|-----------------|----------|-------------------------|----------|-------------------|----------|------------------|----------|------------------------|----------|----------------------------|----------|-------------------------|----------------|-----------------|----------|------------------|----------|---------------------|----------|-------------------------|--------|------------------|---------|---------------------|--------|---------------|--------|---------------|--------|-----------------------|--------|--------------------|-------|----------------------|-------|----------------------|---|---|
| Supp.               | Supp.    | Supp.           | Supp.    | Supp.                   | Supp.    | Supp.             | Supp.    | Supp.            | Supp.    | Supp.                  | Supp.    | Supp.                      | Supp.    | Opp.                    | Supp.          | Supp.           | Supp.    | Supp.            | Supp.    | Supp.               | Supp.    | Supp.                   | Supp.  | Supp.            | Supp.   | Supp.               | Supp.  | Supp.         | Supp.  | Supp.         | Supp.  | Supp.                 | Supp.  | Supp.              | Supp. | Supp.                | Supp. |                      |   |   |
| FIN 4/19            | ENV 3/03 | ENV 3/10        | GAE 4/19 | H 6/02                  | ENV 2/17 | H 5/3             | ENV 2/17 | H 5/03           | ENV 2/17 | ENV 2/17               | ENV 2/17 | H 4/27                     | ENV 2/17 | ENV 3/24                | H Amend A 5/24 | H 5/24          | ENV 3/03 | ED 4/03          | ENV 3/03 | H 5/04              | ENV 3/03 | PD 3/08                 | H 5/30 | H 6/05           | ET 3/14 | APP 5/01            | H 6/02 | ENV 3/24      | H 5/17 | ENV 3/24      | H 5/25 | H 5/04                | H 5/10 |                    |       |                      |       |                      |   |   |
| ✓                   |          | ✓               |          | ✓                       |          | ✓                 |          | ✓                |          |                        |          | ✓                          |          | ✓                       | ✗              |                 | A        |                  |          | ✓                   |          |                         | ✓      | ✗                |         | ✓                   | ✓      | ✓             | ✓      | ✓             | ✓      | ✓                     | ✓      | ✓                  | ✓     | ✓                    | ✓     |                      |   |   |
| ✓                   |          |                 |          | ✓                       |          | ✓                 |          | ✓                |          |                        |          | ✓                          |          |                         | ✗              | ✓               |          | A                |          | A                   |          |                         | ✓      | ✗                |         | ✓                   | ✓      | ✓             | ✓      | ✓             | ✓      | ✓                     | ✓      | ✓                  | ✓     | ✓                    | ✓     | ✓                    |   |   |
| ✓                   |          |                 | ✓        | ✓                       |          | ✓                 |          | ✓                |          |                        |          | ✓                          |          |                         | ✗              | ✓               |          |                  |          | ✓                   |          |                         | ✓      | ✗                |         | ✓                   | ✗      | ✓             | ✓      | ✓             | ✓      | ✓                     | ✓      | ✓                  | ✓     | ✓                    | ✓     | ✓                    |   |   |
|                     |          |                 |          | ✗                       |          | ✓                 |          | ✓                |          |                        |          | ✓                          |          |                         | ✗              | ✗               |          |                  |          | ✓                   |          |                         | ✓      | ✗                | ✗       |                     | ✓      | ✓             | ✓      | ✓             | ✓      | ✓                     | ✓      | ✓                  | ✓     | ✗                    | ✓     | ✓                    |   |   |
|                     | ✓        | ✓               |          | ✓                       |          | ✓                 |          | ✓                |          | ✓                      |          | ✓                          |          | ✓                       | ✗              | ✓               |          | ✓                |          | ✓                   |          |                         | ✓      | ✗                |         |                     | ✓      | ✓             | ✓      | ✓             | ✓      | ✓                     | ✓      | ✓                  | ✓     | ✓                    | ✓     | ✓                    | ✓ |   |
| ✓                   |          |                 |          | ✓                       |          | ✓                 |          | ✓                |          | ✓                      |          | ✓                          |          | ✓                       | ✗              | ✓               |          | ✓                |          | ✓                   |          |                         | ✓      | ✗                |         |                     | ✓      | ✓             | ✓      | ✓             | ✓      | ✓                     | ✓      | ✓                  | ✓     | ✓                    | A     | ✓                    | ✓ |   |
|                     |          |                 |          | ✓                       |          | ✓                 |          | ✓                |          | ✓                      |          | ✓                          |          | ✓                       | ✓              | ✓               |          |                  |          | A                   |          | ✓                       |        | ✓                | ✗       | ✓                   | ✓      | ✓             | ✓      | ✓             | ✓      | ✓                     | ✓      | ✓                  | ✓     | ✓                    | ✓     | ✓                    | ✓ |   |
|                     |          |                 |          | ✓                       |          | ✓                 |          | ✓                |          | ✓                      |          | ✓                          |          | ✓                       | ✓              | ✓               |          |                  |          | ✓                   |          |                         | ✓      | ✗                | ✓       | ✓                   | ✓      | ✓             | ✓      | ✓             | ✓      | ✓                     | ✓      | ✓                  | ✓     | ✓                    | ✓     | ✓                    | ✓ |   |
|                     |          |                 |          | ✗                       |          | ✓                 |          | ✓                |          | A                      |          | ✓                          |          | ✓                       | ✓              | ✓               |          |                  |          | ✓                   |          |                         | ✓      | ✗                | ✗       | ✓                   | ✓      | ✓             | ✓      | ✓             | ✓      | ✓                     | ✓      | ✓                  | ✓     | ✓                    | ✓     | ✓                    | ✓ |   |
| ✓                   | ✗        | ✗               |          | ✗                       | ✓        | ✓                 | ✓        | ✓                | ✓        | ✓                      | ✓        | ✓                          | ✓        | ✗                       | ✗              | ✗               | ✗        | ✗                | ✓        |                     | ✓        | ✓                       | ✓      | ✗                | ✗       |                     | ✓      | ✓             | ✓      | ✓             | ✓      | ✓                     | ✓      | ✓                  | ✓     | ✓                    | ✓     | ✓                    | ✓ |   |
|                     |          |                 |          | ✓                       |          | ✓                 |          | ✓                |          | ✓                      |          | ✓                          |          | ✓                       | A              | A               |          |                  |          | A                   |          |                         | ✓      | ✗                | ✗       | ✓                   | ✓      | ✓             | ✓      | ✓             | ✓      | ✓                     | ✓      | ✓                  | ✓     | A                    | ✓     | ✓                    |   |   |
|                     |          |                 |          | ✓                       |          | ✓                 |          | ✓                |          | ✓                      |          | ✓                          |          | ✓                       | ✗              | ✓               |          | ✓                |          | ✓                   |          |                         | ✓      | ✗                | ✗       | ✓                   | ✓      | ✓             | ✓      | ✓             | ✓      | ✓                     | ✓      | ✓                  | ✓     | ✓                    | ✓     | ✓                    | ✓ |   |
| ✓                   |          |                 |          | ✓                       |          | ✓                 |          | ✓                |          | ✓                      |          | ✓                          |          | ✓                       | ✗              | ✓               |          |                  |          | ✓                   |          |                         | ✓      | ✗                | ✗       | ✓                   | ✓      | ✓             | ✓      | ✓             | ✓      | ✓                     | ✓      | ✓                  | ✓     | ✓                    | ✓     | ✓                    | ✓ |   |
| ✓                   |          |                 |          | ✗                       |          | ✓                 |          | ✓                |          | ✓                      |          | ✓                          |          | ✓                       | ✗              | ✗               |          |                  |          | ✓                   |          |                         | ✓      | ✗                | ✗       | ✓                   | ✓      | ✓             | ✓      | ✓             | ✓      | ✓                     | ✓      | ✓                  | ✓     | ✓                    | ✓     | ✓                    | ✓ |   |
| ✓                   |          |                 |          | ✗                       |          | ✓                 |          | ✓                |          | ✓                      |          | ✓                          |          | ✓                       | ✗              | ✗               |          |                  |          | ✓                   |          |                         | ✓      | ✗                | ✗       | ✓                   | ✓      | ✓             | ✓      | ✓             | ✓      | ✓                     | ✓      | ✓                  | ✓     | ✓                    | A     | ✓                    | ✓ |   |
| ✓                   |          |                 |          | ✗                       |          | ✓                 |          | ✓                |          | ✓                      |          | ✓                          |          | ✓                       | ✗              | ✗               |          | ✗                |          | ✓                   |          |                         | ✓      | ✗                | ✗       |                     | ✓      | ✓             | ✓      | ✓             | ✓      | ✓                     | ✓      | ✓                  | ✓     | ✓                    | ✓     | ✓                    | ✓ | ✓ |

The CT League of Conservation Voters is dedicated to giving our environment a voice at the State Capitol.

We believe that Connecticut can be a powerful leader for environmental policy in our region.

Your membership helps CTLCV advocate for legislation to protect our environment and advance climate action, equity, and democracy.





**ACTION ALERTS**



**DONATE**

**JOIN THE MOVEMENT  
OUR CLIMATE CAN'T WAIT**